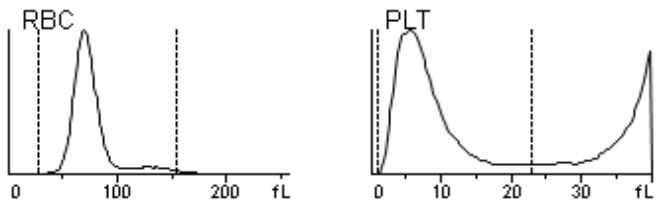
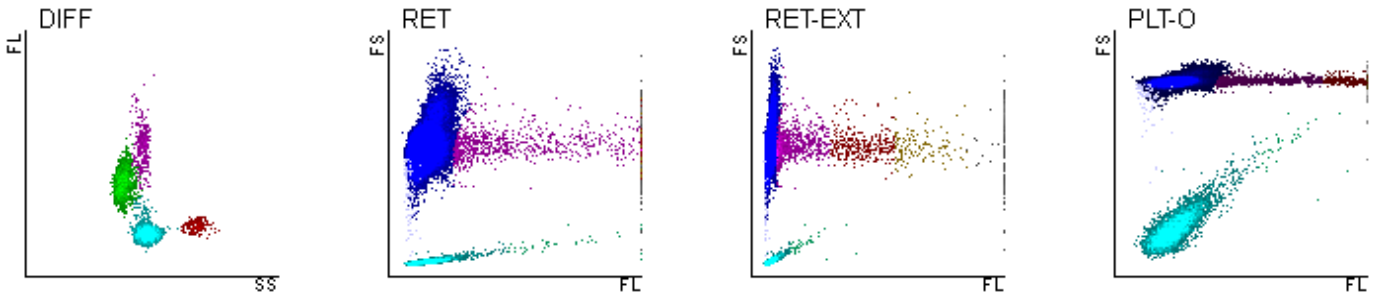


# Hematology Analysis Report

Client: Species: Dog Gender:   
 Patient: Time of analysis: 2023.07.10 11:19 Age:   
 Patient ID: conl Sample ID: majercsik tamás Veterinarian:

Para.	Result	Unit	Ref. Ranges
WBC White Blood Cell Count	8.23	10 <sup>9</sup> /L	5.32 — 16.92
Neu# Neutrophil Number	5.27	10 <sup>9</sup> /L	3.05 — 12.10
Lym# Lymphocyte Number	2.19	10 <sup>9</sup> /L	0.70 — 4.95
Mon# Monocyte Number	0.45	10 <sup>9</sup> /L	0.20 — 1.38
Eos# Eosinophil Number	0.32	10 <sup>9</sup> /L	0.04 — 1.28
Bas# Basophil Number	0.00	10 <sup>9</sup> /L	0.00 — 0.13
Neu% Neutrophil Percentage	0.641		0.420 — 0.840
Lym% Lymphocyte Percentage	0.266		0.060 — 0.400
Mon% Monocyte Percentage	0.054		0.025 — 0.120
Eos% Eosinophil Percentage	0.039		0.003 — 0.110
Bas% Basophil Percentage	0.000		0.000 — 0.010
RBC Red Blood Cell Count	7.00	10 <sup>12</sup> /L	4.70 — 8.69
HGB Hemoglobin Concentration	171	g/L	115 — 201
HCT Hematocrit	0.502		0.350 — 0.600
MCV Mean Corpuscular Volume	71.7	fL	60.0 — 77.5
MCH Mean Corpuscular Hemoglobin	24.4	pg	20.0 — 27.0
MCHC Mean Corpuscular Hemoglobin Concentration	340	g/L	300 — 380
RDW-CV Red Cell Distribution Width	0.135		0.113 — 0.189
RDW-SD Red Cell Distribution Width - Standard Deviation	35.2	fL	29.1 — 55.1
PLT Platelet number	345	10 <sup>9</sup> /L	140 — 520
MPV Mean Platelet Volume	8.0	fL	7.6 — 16.1
PDW Platelet Distribution Width	15.9		13.8 — 17.9
PCT Plateletcrit	2.78	mL/L	1.20 — 7.00
P-LCC Platelet-Large Cell Count	39	10 <sup>9</sup> /L	25 — 180
P-LCR Platelet-Large Cell Ratio	0.113		0.100 — 0.570
IPF Immature Platelet Fraction	0.7	%	0.4 — 17.1
RET# Reticulocyte Number	62.9	10 <sup>9</sup> /L	9.0 — 115.0
RET% Reticulocyte Percentage	0.90	%	0.16 — 1.95
IRF Immature Reticulocyte Fraction	33.8	%	0.0 — 45.1
LFR Low fluorescent ratio	66.2	%	56.0 — 100.0
MFR Middle fluorescent ratio	24.7	%	0.0 — 26.0
HFR High fluorescent ratio	9.1	%	0.0 — 22.0
RHE Reticulocyte Hemoglobin Expression	26.9	pg	20.0 — 28.3



Operated by: User

Comments:

Message: